


Flanged DG Series **Flanged Globe Valves** **2-Way & 3-Way • 2-1/2" - 6"**

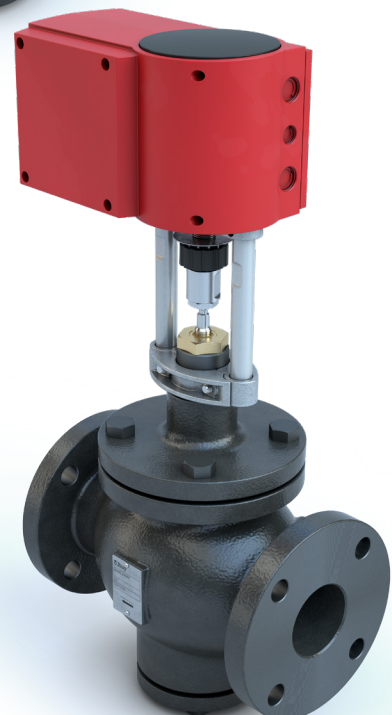
DOCUMENT	
CONTENTS	Features
	Specifications
	Piping Charts
	Close-Off Charts
	Steam Sizing
DIMENSIONS	
LOOKING FOR MORE	
	© 2022 Bray International, Inc. 01/18/24

Flanged DG Series Globe Valves provide stable and accurate control of both water, 50/50 water Glycol solutions and steam heat exchangers on fan coil units, VAV reheat coils, and air handling units up to 900 GPM. These globe valves feature rangeability of greater than 100:1 to provide precise control.

Two way standard trim valves provide an equal percentage flow characteristic for use on hot water and chilled water.

Two way stainless trim valves - recommended for steam applications, and 3-way mixing valves provide a linear flow characteristic.

All Flanged DG Series Globe Valves feature a cartridge style packing, which is easily replaceable while the valve is in line. Constant plug guiding and precision-machined metal to metal seating assures ANSI Class IV shutoff (.01%) which provides low leakage and energy conservation.



Features and Benefits

- **Rangeability >100:1**
Superior control accuracy
- **Cartridge Packing**
Easily replaceable while valve is in line
- **2-Way and 3-Way bodies from 2-1/2" to 6"**
Covers all applications from fan coil units to air handling units
- **Stainless Steel Trim Option**
Applicable to steam inlet pressure up to 50 PSI

Flanged DG Series - Specifications

Technical Specifications - Flanged Globe Valve Body				
Service	Chilled/Hot Water		Steam (0 to 50 PSI Max Inlet Pressure)	
	Chilled/Hot Water, 50/50 Glycol Solutions & Saturated Steam			
Size Range	2-1/2" - 6", 2-Way Normally Open, 3-Way Universal Mixing or Diverting		2-1/2" - 6", 2-Way Normally Open	
Available Cv's	63, 100, 160, 250, 400			
Media Temperature Range	20°F to 250°F (-7°C to 120°C)			
Max Inlet Temperature/Pressure	°F	PSI	°F	PSI
	-20° to 150°	200	337°	50
	200° 250°	190 175		
Maximum Recommended Differential Pressure	25 PSI Water		50 PSIG Steam	
Valve Body Pressure Rating	ANSI Class 125			
Maximum Close-Off Pressure	Refer to Close-Off Charts			
Close-Off Ratings	According to ANSI/FCI 70-2			
Flow Characteristic	Equal Percentage for 2-Way valves with standard trim. Linear for 2-Way valves with Stainless Steel trim. 3-Way is equal percentage NC port, and linear for NO port.			
Stem Lift	2-1/2" and 3" - 3/4" (20 mm) 4", 5" and 6" - 1-1/2" (40 mm)			
Leakage Rate	Class IV (0.01% of Cv)			
Rangeability	> 100:1			
Seat Style	Flanged - Metal to metal			
Materials	Body	Cast iron ASTM A 126 Class B		
	Stem	Stainless Steel (ASTM A582 Type 303)		
	Valve Trim Required	Bronze	Stainless Steel (noted by SS in the valve P/N)	
	Packing	Double Ethylene propylene (EPDM) O-Rings		
Certifications	CRN - OC24303.5			
Warranty	5 Years limited from time of shipment.			

Note - Normally closed available upon request.

When the valve is used for diverting applications, the max DP is restricted to 90% of the max DP that is specified for the valve when it is used in a mixing application

Disclaimer - The performance specifications are nominal and conform to acceptable industry standards.

For application at conditions beyond these specifications, consult the local Bray office.

Bray, Inc. shall not be liable for damages resulting from misapplication or misuse of its products.

Flanged DG Series - Actuator Options

GA Series



- **Multiple control inputs for both spring return and non spring return models.**
Meets the requirements of virtually any heat exchanger control application
- **GA(S) Series automatically adapts to valve stroke**
Built-in intelligence matches the actuator to the valve stroke.
- **GA(S) Series automatically connects spindle after application of control voltage**
Easy assembly with valve.
- **Spring Return Models**
Available "fail up/retracted" and "fail down/extended"

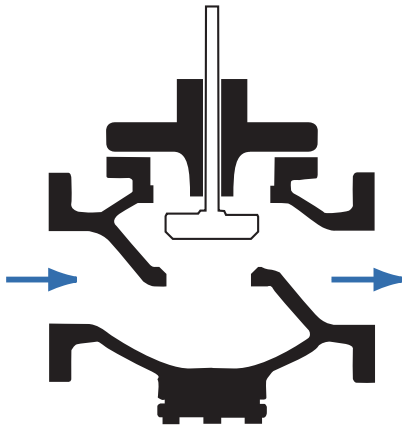


VAL Series

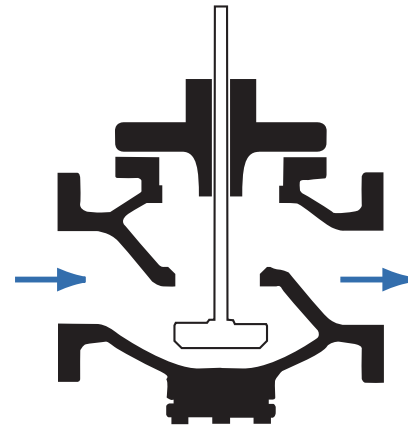
- **High Output Force**
Provides high close-off pressure ratings
- **Direct Mount to Bray DG Series Globe Valves**
Eases installation and minimizes space requirements
- **Spring Return Operation**
Returns valve to the open position upon loss of power
- **User-Selectable Input Signals**
Accepts current or voltage inputs
- **Visual and Electronic Position Indication**
Provides position feedback and provides for remote monitoring

Flanged DG Series - Piping Setup for 2-Way Valves

2-Way Application:
Push down to Close



2-Way Application:
Push down to Open

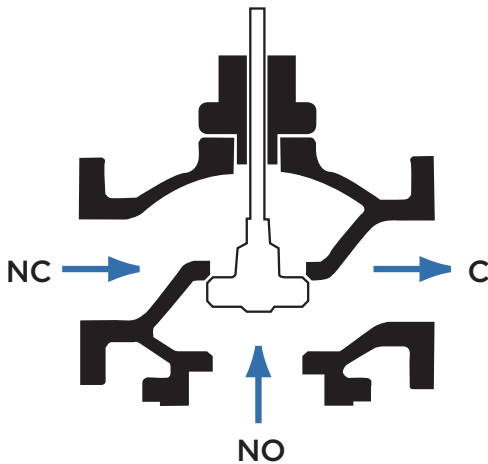


Any configuration of fail open, fail closed, reverse acting or direct acting can be set up upon special request. Push down to close is the standard configuration.

Flanged DG Series - Mixing and Diverting Piping Setup for 3-Way Valves

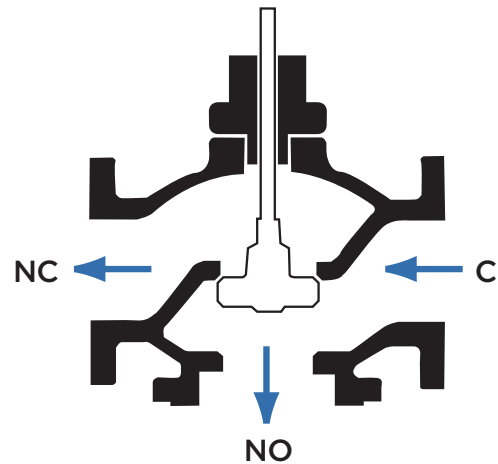
3-Way Mixing:

Stem down = Flow from NC to C (Common).
Stem up = Flow from NO to C (Common).



3-Way Diverting:

Stem down = Flow from C (Common) to NC.
Stem up = Flow from C (Common) to NO.



Any configuration of fail open, fail closed, reverse acting or direct acting can be set up upon special request. All diverting globe valves will ship in the above configuration unless otherwise specified.

Flanged DG Series - Mode of Actuation

GA(S) Series Linear Actuators:

GA actuators can be wired for three modes of actuation; 2-point on/off, 3-point floating or proportional actuation. When the actuator is used for proportional actuation the unit can be wired such that the shaft will extend or retract with an increasing signal. For wiring instructions reference installation instructions. 0-10 VDC feedback is available for all three modes of actuation.

- 1) For non-spring return model GA24-562, if power is removed the actuator will fail in place. For wiring instructions reference installation instructions.
- 2) Two different spring return models can be selected. The GASEX24-450 is designed such that the shaft will extend when power is removed and the GASRE24-450 is designed such that the shaft will retract when power is removed.

Flanged DG Series - Mode of Actuation (Continued)

- 1) For non spring return assemblies a fully extended shaft will close the valve and a fully retracted shaft will open the valve.
- 2) For spring return assemblies the spring extended models are used for normally closed assemblies and the spring retracted models are used for normally open assemblies.

3 Way Valve Assemblies:

- 1) For non spring return assemblies a fully extended shaft will make port NC open to C and a fully retracted shaft will make port NO open to C.
- 2) For spring return assemblies the spring extended models are used when the normal position desired is port NC open to C and the spring retracted models are used when the normal position desired is port NO open to C.

VAL Series Linear Actuators:

VAL actuators are spring return and used for proportional actuation only. The unit is designed such that the shaft will retract when power is removed. The actuator shaft will extend with an increasing signal. 0-10 VDC or 4-20 mA feedback is available.

2 Way Valve Assemblies:

Valve assemblies are designed to be normally open since the actuators' spring normally retracts the shaft.

3 Way Valve Assemblies:

Valve assemblies are used when the normal position desired is port NO open to C since the actuators' spring normally retracts the shaft.

Flanged DG Series - 2-Way Actuator Selection and Close-Off Charts

2-Way (Flanged DG) with GA(S) Series Actuator - Close-Off Chart (PSI) - Water*					Non-Spring Return	Spring Return Normally Open	Spring Return Normally Closed
Actuator Model Details					GA24-562	GASRE24-450	GASEX24-450
Model Number	Size		Flow Coefficient		On/Off, Floating and Modulating		
	In.	mm	Cv	Kv	24 VAC (±20%) at 50/60 Hz or 24 VDC (±15%)		
DG250-2-63X	2.5	65	63	54	86	69	69
DG3-2-100X	3	80	100	85	57	45	45
DG4-2-160X	4	100	160	137	37	29	29
DG5-2-250X	5	125	250	214	24	19	19
DG6-2-400X	6	150	400	340	16	12	13

X - indicates "N = Normally Open", Shaft Retracted or
"C = Normally Closed", Shaft Extended

No Specification is required for Non-Spring Return Actuators
-A - add at end of part number for optional Auxiliary Switches

* Above Close-Off ratings apply to steam up to 50 PSI for SS trim models only. Steam Close-Offs should not exceed 50 PSI.

2-Way (Flanged DG) with VAL ¹ Series Actuator - Close-Off Chart (PSI) - Water*					Spring Return Normally Open		Spring Return Normally Closed	
Actuator Model Details					VAL-SRS07P	VAL-SRS15P	VAL-SRS07P	VAL-SRS15P
Model Number	Size		Flow Coefficient		Modulating			
	In.	mm	Cv	Kv	24 VAC (±20%), 50/60 Hz			
DG250-2-63X	2.5	65	63	54	153	-	97	-
DG3-2-100X	3	80	100	85	101	-	63	-
DG4-2-160X	4	100	160	137	-	65	-	39
DG5-2-250X	5	125	250	214	-	42	-	25
DG6-2-400X	6	150	400	340	-	29	-	17

X - indicates "N = Normally Open", Shaft Retracted or
"C = Normally Closed", Shaft Extended

* Above Close-Off ratings apply to steam up to 50 PSI for SS trim models only. Steam Close-Offs should not exceed 50 PSI.

Flanged DG Series - 3-Way Actuator Selection and Close-Off Charts

3-Way (Flanged DG) with GA(S) Series Actuator - Close-Off Chart (PSI) - Water*						Non-Spring Return Shaft Retracted ¹	Non-Spring Return Shaft Extended ²	Spring Return Normally Retracted ³	Spring Return Normally Extended ⁴
Actuator Model Details						GA24-562	GA24-562	GASRE24-450	GASEX24-450
Model Number	Size		Flow Coefficient		On/Off, Floating and Modulating				
	In.	mm	Cv	Kv	24 VAC (±20%) at 50/60 Hz or 24 VDC (±15%)				
DG250-3-63	2.5	65	63	54	85	86	68	69	
DG3-3-100	3	80	100	85	55	57	44	45	
DG4-3-160	4	100	160	137	34	37	27	29	
DG5-3-250	5	125	250	214	22	24	18	19	
DG6-3-400	6	150	400	340	15	16	12	13	

1 - Indicates Shaft Retracted. Ports NO to C open

2 - Indicates Shaft Extended. Ports NC to C open

3 - Valve is shipped ports NO to C open

4 - Valve is shipped ports NC to C open

-A - add at end of part number for optional Auxiliary Switches

* Above Close-Off ratings apply to steam up to 50 PSI for SS trim models only. Steam Close-Offs should not exceed 50 PSI.

3-Way (Flanged DG) with VAL ⁵ Series Actuator - Close-Off Chart (PSI) - Water*						Spring Return Shaft Retracted ¹	Spring Return Shaft Extended ²		
Actuator Model Details						VAL-SRS07P	VAL-SRS15P	VAL-SRS07P	VAL-SRS15P
Model Number	Size		Flow Coefficient		Modulating				
	In.	mm	Cv	Kv	24 VAC (±20%), 50/60 Hz				
DG250-3-63	2.5	65	63	54	97	-	153	-	
DG3-3-100	3	80	100	85	63	-	101	-	
DG4-3-160	4	100	160	137	-	39	-	65	
DG5-3-250	5	125	250	214	-	25	-	42	
DG6-3-400	6	150	400	340	-	17	-	29	

1 - Indicates Shaft Retracted. Ports NO to C open

2 - Indicates Shaft Extended. Ports NC to C open

5 - VAL Series Actuators are Spring Return, Shaft Retracted

* Above Close-Off ratings apply to steam up to 50 PSI for SS trim models only. Steam Close-Offs should not exceed 50 PSI.

Flanged DG Series - Adjusted Cv Chart

Adjusted Cv Chart - (Flanged DG)												
Mode/Valve Size					Pipe Size /At Full Open (Adjusted Cv)							
Model Number	Size		Flow Coefficient									
	In.	mm	Cv	Kv	2-1/2"	3"	4"	5"	6"	8"	10"	
DG250-X-63	2.5	65	63	54	63.0	62.7	61.7	61.1	-	-	-	
DG3-X-100	3	80	100	85	-	100.0	98.7	97.3	96.3	-	-	
DG4-X-160	4	100	160	137	-	-	160.0	158.9	157.3	155.2	-	
DG5-X-250	5	125	250	214	-	-	-	250.0	248.7	245.0	242.5	
DG5-X-400	6	150	400	340	-	-	-	-	400.0	394.8	389.1	

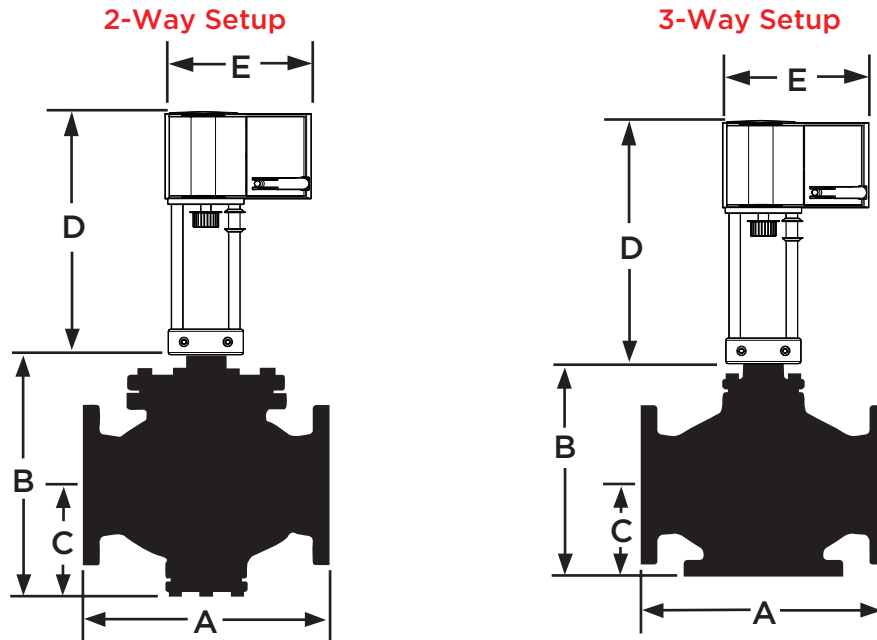
X = (2) for 2-Way
(3) for 3-Way

Flanged DG Series - Steam Tables

Steam Sizing Table (Flow Rate lbs./hr)																
Cv	Low Pressure Steam Inlet Pressure (PSIG)								Medium Pressure Steam Inlet Pressure (PSIG)						High Pressure Steam Inlet Pressure (PSIG)	
	2		5		10		15		20		25		40		50	
	ΔP		ΔP		ΔP		ΔP		ΔP		ΔP		ΔP		ΔP	
	0.2*	1.6	0.5*	4.0	1.0*	8.0	1.5*	12.0	2.0*	14.0	2.5*	16.0	4.0*	23.0	5.0*	27.0
0.4	2.2	5.9	3.7	9.5	5.9	13.9	7.8	17.5	9.7	20.4	11.6	23.4	17.1	32.4	20.7	38.3
0.95	5.2	14	8.8	22.6	13.9	32.9	18.5	41.5	23	48.5	27.5	55.5	40.6	77	49.2	90.9
0.99	5.4	14.6	9.2	23.5	14.5	34.3	19.3	43.3	24	50.6	28.6	57.8	42.3	80.2	51.3	94.8
1.1	6	16.2	10.2	26.2	16.1	38.1	21.5	48.1	26.7	56.2	31.8	64.3	47	89.1	57	105.3
1.3	7.1	19.2	12.2	31	19	45.1	25.4	56.8	31.5	66.4	37.6	75.9	55.5	105.3	67.4	124.4
1.8	9.8	27	18.7	43	26.3	62.4	35.1	78.7	43.7	91.9	52.1	105.2	76.9	145.8	93.3	172.3
2.2	12	32.4	20.4	52	32	76	43	96	53	112	63.6	128.5	94	178	114	210.3
2.5	13.6	37	23	59	37	87	49	109	61	128	72	146	107	203	130	239
3.3	18	49	31	79	48	114	64	144	80	169	95	193	141	267	171	316
3.6	19.6	53	34	86	53	125	70	157	87	184	104	210	154	292	187	345
3.8	20.7	56	35	90	56	132	74	166	92	194	110	222	162	308	197	364
4.0	22	59	37	95	58	139	78	175	97	204	116	234	171	324	207	383
5.0	27	74	47	119	73	173	98	219	121	255	145	292	214	405	259	479
5.5	30	81	51	131	80	191	107	240	134	281	159	321	235	446	285	526
6.0	33	89	56	143	88	208	117	262	146	306	174	351	256	486	311	574
6.2	34	91	58	147	91	215	121	271	150	317	179	362	265	502	321	593
7.4	40	109	69	176	108	257	144	324	180	378	214	432	316	599	384	708
7.5	41	111	70	178	110	260	146	328	182	383	217	438	320	608	389	718
8.2	45	121	76	195	120	284	160	359	199	419	237	479	350	664	425	785
8.5	46	125	79	202	124	295	166	372	206	434	246	497	363	689	441	814
9.0	49	133	84	214	131	312	176	393	218	460	260	526	385	729	466	861
10.5	57	155	98	250	153	364	205	459	255	536	304	613	449	851	544	1005
11.0	60	162	102	262	161	381	215	481	267	562	318	643	470	891	570	1053
15.0	82	221	139	357	219	520	293	656	304	766	434	876	641	1215	777	1436
16.0	87	236	149	380	234	555	312	700	388	817	463	935	684	1296	829	1531
17.4	95	257	162	414	254	603	340	761	422	889	503	1016	743	1409	902	1665
25.0	136	369	232	594	365	867	488	1093	607	1277	723	1460	1068	2025	1296	2393
35.8	195	528	333	851	523	1241	699	1565	867	1828	1036	2091	1529	2900	1856	3427
40.0	218	590	372	951	584	1387	780	1749	970	2043	1157	2337	1709	3240	2073	3829
45.0	245	664	418	1070	657	1560	878	1967	1092	2298	1302	2629	1923	3645	2332	4307
56	305	826	521	1331	818	1942	1093	2448	1359	2860	1620	3271	2392	4536	2903	5360
65	354	958	604	1545	949	2254	1268	2842	1577	3320	1881	3797	2777	5265	3369	6221
70	381	1032	651	1664	1022	2427	1366	3061	1698	3575	2025	4089	2991	5670	3628	6670
75	409	1106	697	1783	1095	2601	1463	3279	1820	3830	2170	4381	3204	6075	3887	7179
85	463	1253	790	2021	1241	2947	1658	3716	2062	4341	2459	4966	3631	6885	4406	8136
100	545	1475	930	2377	1460	3468	1951	4372	2426	5107	2893	5842	4272	8101	5183	9571
115	627	1696	1069	2734	1680	3988	2244	5028	2790	5873	3327	6718	4913	9316	5961	11007
145	790	2138	1348	3447	2118	5028	2829	6340	3518	7405	4195	8471	6195	11746	7516	13878
170	926	2507	1580	4042	2483	5895	3177	7433	4124	8682	4918	9931	7263	13771	8811	16271
200	1090	2949	1859	4755	2921	6935	3902	8744	4852	10214	5786	11684	8544	16201	10366	19143
235	1281	3465	2184	5587	3432	8149	4585	10275	5701	12002	6799	13729	10040	19036	12180	22493
275	1499	4055	2556	6538	4016	9536	5366	12024	6672	14044	7956	16065	11749	22277	14254	26321
350	1907	5161	3253	8321	5112	12136	6829	15303	8491	17875	10126	20447	14953	28352	18141	33500
425	2316	6267	3950	10104	6207	14737	8292	18582	10311	21705	12296	24828	18157	34427	22028	40678
440	2398	6488	4090	10461	6426	15257	8585	19238	10675	22471	12730	25704	18798	35642	22806	42114
640	3488	9437	5949	15215	9347	22192	12487	27982	15527	32685	18516	37388	27342	51844	33172	61257
680	3706	10027	6321	16166	9931	23579	13268	29731	16498	34728	19673	39725	29051	55084	35245	65085
1125	6131	16589	10457	26746	16430	39010	21950	49187	27294	57454	32547	65722	48063	91131	58310	107678
1150	6267	16958	10689	27340	16796	39877	22438	50280	27900	58731	33271	67182	49131	93156	59606	110071
1750	9537	25805	16267	41604	25558	60682	34145	76513	42457	89373	50629	102234	74764	141760	90705	167499
1850	10082	27280	17196	43982	27019	64150	36096	80885	44883	94481	53522	108076	79036	149860	95888	177070
2600	14169	38339	24167	61812	37972	90157	50730	113677	63079	132783	75220	151890	111078	210614	134762	248855
2650	14442	39076	24632	63001	38703	91890	51706	115863	64292	135337	76667	154811	113214	214665	137353	253641
3400	18529	50136	31604	80831	49656	117897	66339	148654	82488	173640	98365	198625	145256	275419	176227	325426
4500	24524	66356	41828	-	65722	-	87802	-	109175	-	130189	-	-	-	-	-
5400	29429	79628	50194	-	78866	-	105362	-	-	-	-	-	-	-	-	-
7000	38148	-	65066	-	102234	-	-	-	-	-	-	-	-	-	-	-
10000	54498	-	92952	-	-	-	-	-	-	-	-	-	-	-	-	-

* Indicates 2-Position Control Applications. Higher Pressure Drop for Modulating Control Applications.
 Note: Steam Capacity in Pounds per Hour. Table is Based on Saturated Steam.

Flanged DG Series - 2 & 3-Way - GA(S) Series Actuator Dimensions



2-Way Dimensions for GA(S) Series Actuator with Flanged DG Valve												
Model Number	Size		Flow Coefficient		Stroke in.(mm)	A	B	C	D Actuator Height	E Actuator Width	Weight ¹	
	In.	mm	Cv	Kv							lbs.	kg.
DG250-2-63	2.5	65	63	54	3/4 (20)	10-7/8 (276)	11 (281)	4-7/8 (123)	11-3/8 (289)	9-1/16 (230)	60	27
DG3-2-100	3	80	100	85	3/4 (20)	11-3/4 (299)	12-1/4 (312)	5-5/16 (135)			76	34
DG4-2-160	4	100	160	137	1-1/2 (40)	13-7/8 (352)	13-9/16 (345)	6-5/16 (160)	12-5/16 (313)	9-1/16 (230)	124	56
DG5-2-250	5	125	250	214	1-1/2 (40)	15-3/4 (400)	15-3/16 (385)	7 (177)			155	70
DG6-2-400	6	150	400	340	1-1/2 (40)	17-3/4 (451)	16-3/4 (426)	7-7/8 (200)			212	96

¹ Weights are for Valve Only.
Add 3.94 in. for optional High Media Temperature Height Extender

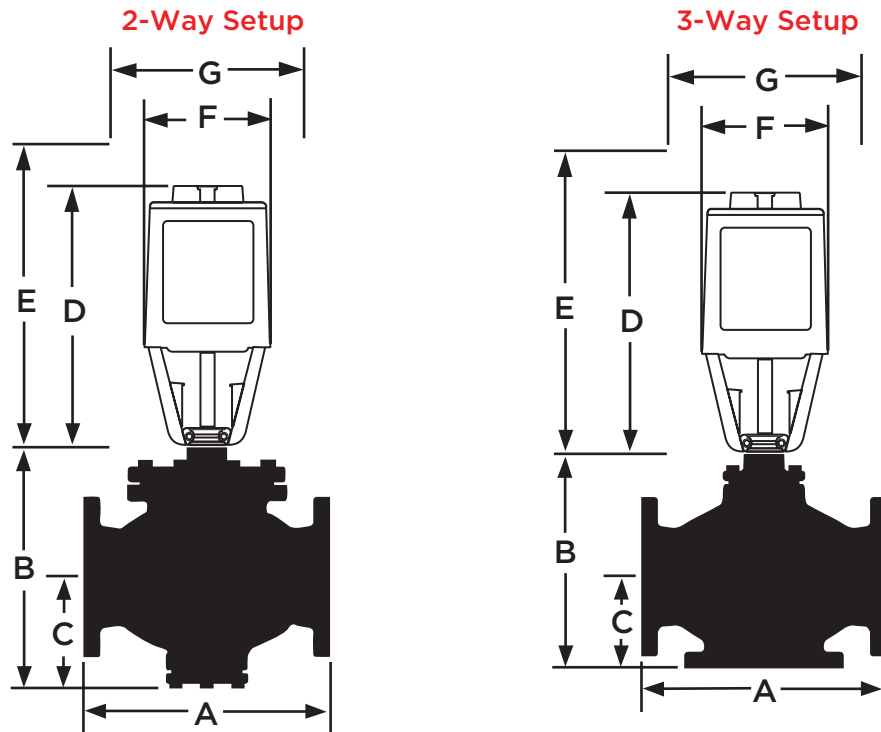
Non-Spring Return Actuator Weight 9.1 lb. (4.1 kg)
Spring Return Actuator Weight 12.3 lb. (5.6 kg)

3-Way Dimensions for GA(S) Series Actuator with Flanged DG Valve												
Model Number	Size		Flow Coefficient		Stroke in.(mm)	A	B	C	D Actuator Height	E Actuator Width	Weight ¹	
	In.	mm	Cv	Kv							lbs.	kg.
DG250-3-63	2.5	65	63	54	3/4 (20)	10-7/8 (276)	9-3/8 (239)	3-3/4 (95)	11-3/8 (289)	9-1/16 (230)	50	23
DG3-3-100	3	80	100	85	3/4 (20)	11-3/4 (299)	10-3/4 (272)	4-3/8 (111)			65	30
DG4-3-160	4	100	160	137	1-1/2 (40)	13-7/8 (352)	12-1/2 (317)	5-1/8 (132)	12-5/16 (313)	9-1/16 (230)	110	50
DG5-3-250	5	125	250	214	1-1/2 (40)	15-3/4 (400)	13-3/4 (349)	5-3/4 (146)			136	62
DG6-3-400	6	150	400	340	1-1/2 (40)	17-3/4 (451)	15-1/2 (393)	6-5/8 (167)			141	64

¹ Weights are for Valve Only.
Add 3.94 in. for optional High Media Temperature Height Extender

Non-Spring Return Actuator Weight 9.1 lb. (4.1 kg)
Spring Return Actuator Weight 12.3 lb. (5.6 kg)

Flanged DG Series - 2 & 3-Way - VAL Series Actuator Dimensions



2-Way Dimensions for VAL Series Actuator with Flanged DG Valve

Model Number	Size		Flow Coefficient		Stroke in.(mm)	A	B	C	D Actuator Height	E Service Height	F Actuator Width	G Service Width	Weight ¹	
	In.	mm	Cv	Kv									lbs.	kg.
DG250-2-63	2.5	65	63	54	3/4 (20)	10-7/8 (276)	11 (281)	4-7/8 (123)	14-3/4 (375)	22-3/4 (578)	8-15/16 (226)	25 (635)	60	27
DG3-2-100	3	80	100	85	3/4 (20)	11-3/4 (299)	12-1/4 (312)	5-5/16 (135)					76	34
DG4-2-160	4	100	160	137	1-1/2 (40)	13-7/8 (352)	13-9/16 (345)	6-5/16 (160)					124	56
DG5-2-250	5	125	250	214	1-1/2 (40)	15-3/4 (400)	15-3/16 (385)	7 (177)					155	70
DG6-2-400	6	150	400	340	1-1/2 (40)	17-3/4 (451)	16-3/4 (426)	7-7/8 (200)					212	96

¹ Weights are for Valve Only.

VAL-SRS07P Actuator Weight 18.9 lb. (8.6 kg)
VAL-SRS15P Actuator Weight 22.0 lb. (10.0 kg)

3-Way Dimensions for VAL Series Actuator with Flanged DG Valve

Model Number	Size		Flow Coefficient		Stroke in.(mm)	A	B	C	D Actuator Height	E Service Height	F Actuator Width	G Service Width	Weight ¹	
	In.	mm	Cv	Kv									lbs.	kg.
DG250-3-63	2.5	65	63	54	3/4 (20)	10-7/8 (276)	9-3/8 (239)	3-3/4 (95)	14-3/4 (375)	22-3/4 (578)	8-15/16 (226)	25 (635)	50	23
DG3-3-100	3	80	100	85	3/4 (20)	11-3/4 (299)	10-3/4 (272)	4-3/8 (111)					65	30
DG4-3-160	4	100	160	137	1-1/2 (40)	13-7/8 (352)	12-1/2 (317)	5-1/8 (132)					110	50
DG5-3-250	5	125	250	214	1-1/2 (40)	15-3/4 (400)	13-3/4 (349)	5-3/4 (146)					136	62
DG6-3-400	6	150	400	340	1-1/2 (40)	17-3/4 (451)	15-1/2 (393)	6-5/8 (167)					141	64

¹ Weights are for Valve Only.

VAL-SRS07P Actuator Weight 18.9 lb. (8.6 kg)
VAL-SRS15P Actuator Weight 22.0 lb. (10.0 kg)